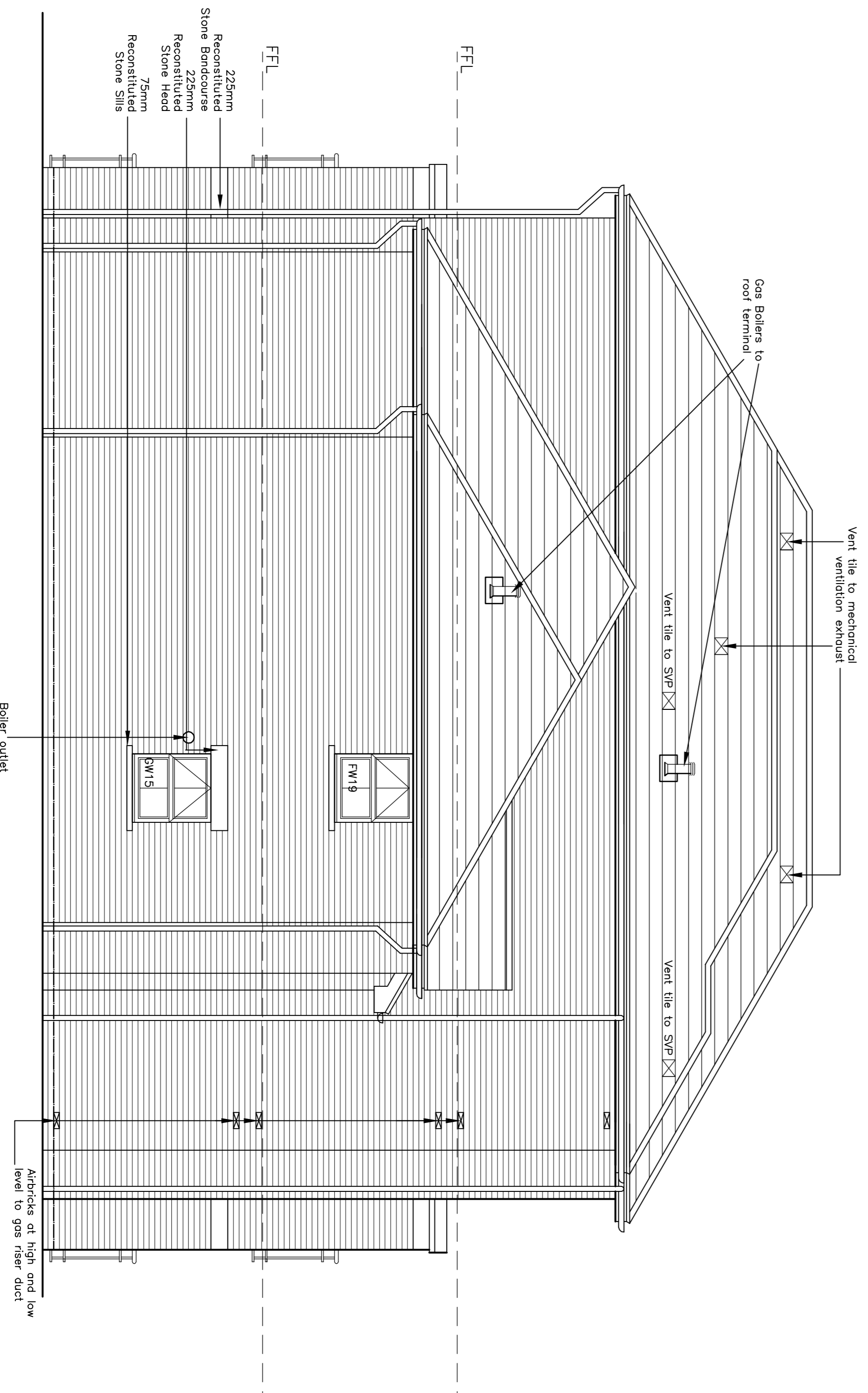
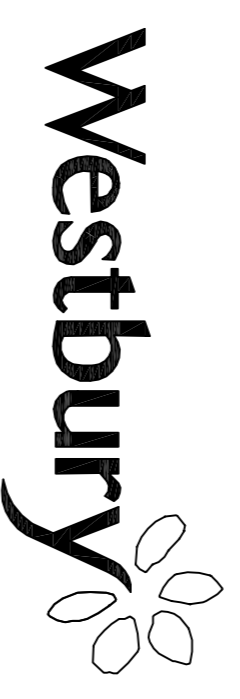


**EAST FACING ELEVATION**



**SOUTH FACING ELEVATION**



WESTBURY HOMES (HOLDINGS) LTD  
CENTRAL HOUSE  
SABRE CLOSE, QUEDGELEY  
GLOUCESTER GL2 4NZ

Project:

**RESIDENTIAL  
DEVELOPMENT  
268 BATH ROAD  
WORCESTER**

Revisions

- F: 04/12/03: SVP vent added
- E: 03/12/03: Entrance doors amended
- D: 02/12/03: Services amended
- C: 20/11/03: Superstructure issue
- B: 31/10/03: Design amendments
- A: 14/10/03: Coordinated amendments

Drawn- SJR

Date- Oct. 2003

Scale- 1:50

D/c- Westbury/BathRoad

Drawing title:

**BLOCK A  
ELEVATIONS 1**

Drawing No.

A/30

Revision

F